

BPE

Banpong Engineering Company Limited



21/1 Moo.1 Huapho-Bansing Rd., Huapho, Bangphae, Ratchaburi 70160

Tel. 032-349515 Fax. 032-349398

<http://www.bpe-boiler.com> e-mail : contact@bpe-boiler.com

ABOUT US



Registered Capital	80,000,000 Baht
Total Area	201,600 Square Metres
Staff	350 Peoples
Project Value	500 - 1,100 Million Baht/Year

Banpong Engineering Co.,Ltd. (BPE) was established on 28 August, 1991 in order to provide complete services and solutions specifically for your industries. Our specialty revolves around sugar industrials, dust collector and biomass power plant.

Factory Site and Machinery



Our factory is divided into three sections which are production, assembly and storage. All sections are equipped with necessary tools and machines. Automated and laser systems are applied to our production and assembly process. Customized products are accurately constructed in order to meet customers' satisfaction.



BPE is a manufacturer located locally in Thailand. This typically results in not only responsive but also competent service for our customers. In additional, Engineering inspection and certification services are proficiently provided.

Reference Project

In past 20 years, More than 140 Projects achieved.
Sugar Industry More than 32 Companies
Power Plant More than 8 Companies
In past 20 years, More than 140 Projects achieved.
Food Industry More than 15 Companies
Other Projects More than 15 Companies

Project Timeline

- 1991 Kaset Phol Sugar Co.,Ltd.—Udonthani, Thailand
Mitr Phol Corp.—Suphanburi, Thailand
- 1992 Korach Industry—Nakornratchasima, Thailand
Mitr Siam Sugar—Kampangpeth, Thailand
Thai molasses system—Thailand
- 1993 Rerm Udom Sugar Factory—Udonthani, Thailand
Mitr Siam Sugar—Kampangpeth, Thailand
- 1994 Eastern Sugar and Cane Co.,Ltd.—Saekaew Thailand
Ream Udom Sugar Factory—Udonthani, Thailand
The Kumphawapi Sugar Co.,Ltd.—Udonthani, Thailand
System Corp.—Thailand
- 1995 Irrigation Project Klong Sadao—Songkla, Thailand
Mitr Phu Viang Sugar Co.,Ltd.—Khonkaen, Thailand
A.P.R. Consultant Co.,Ltd.
Eastern Sugar and Cane Co.,Ltd.—Saekaew, Thailand
KTMSG Co.,Ltd.—Angthong, Thailand
Mitr Siam Sugar Co.,Ltd.—Kampangpech, Thailand
Prachuab Sugar Factory—Kanchanaburi, Thailand
- 1996 NST Steel Industry Co.,Ltd.—Bangkok, Thailand
NY Sugar Co.,Ltd.—Nakornratchasima, Thailand
Kaset Phol Sugar Co.,Ltd.— Udonthani, Thailand
Mitr Phu Viang Sugar Co.,Ltd.—Khonkaen, Thailand
Chumporn Palm Oil Public Co.,Ltd.—Chumporn, Thailand
Eastern Sugar Co.,Ltd.—Saekaew, Thailand

Reference Project

Project Timeline

- 1997 The Better Food Co.,Ltd.—Ratchaburi, Thailand
Burirum Sugar Co.,Ltd.—Burirum, Thailand
Mitr Siam Sugar Co.,Ltd.—Kampangpeth, Thailand
Thai Union Paper Co.,Ltd.—Bangkok, Thailand
Mitr Phu Viang Sugar Co.,Ltd.—Khonkaen, Thailand
United Farmer & Industry Co.,Ltd.—Chaiyaphum, Thailand
The Kumphawaphi Sugar Co.,Ltd.—Udonthani, Thailand
Siam Invetrotech Co.,Ltd.—Bangkok, Thailand
Guangxi Funan East Asia Sugar Co.,Ltd.—Naning, China
- 1998 Rayong Sugar Co.,Ltd.—Rayong, Thailand
Mitr Phu Viang Sugar Co.,Ltd.—Khonkaen, Thailand
Mitr Phol Co.,Ltd.—Bangkok, Thailand
The Fermentation Industry Co.,Ltd.—Ratchaburi, Thailand
Mitr Siam Sugar Co.,Ltd.—Kampangpeth, Thailand
N.R. Intertech Co.,Ltd.—Bangkok, Thailand
The Union Paper Public Co.,Ltd.—Bangkok, Thailand
Thanyakij Rice Mill—Nakornpathom, Thailand
- 1999 Guangxi Funan East Asia Sugar Co.,Ltd.—Naning, China
Mitr Phol Co.,Ltd.—Bangkok, Thailand
Indorama Chemical (Thailand) Ltd.—Saraburi, Thailand
Chumporn Palm Oil Industry Co.,Ltd.—Chumporn, Thailand
N.R.Intertech Co.,Ltd.—Bangkok, Thailand
- 2000 Burapa Industry Co.,Ltd.—Pathumthani, Thailand
Wangkanai Sugar Co.,Ltd.—Kanchanaburi, Thailand
Somchai Mechanic Co.,Ltd.— Bangkok, Thailand
Chumporn Palm Oil Public Co.,Ltd.—Chumporn, Thailand
Chia Meng Co.,Ltd.—Nakornratchasima, Thailand
KTMSG Co.,Ltd.—Angthong, Thailand
Mitr Kalasin Sugar Co.,Ltd.—Kalasin, Thailand
Mitr Phu Viang Sugar Co.,Ltd.—Khonkaen, Thailand
Mitr Phol Co.,Ltd.—Suphanburi, Thailand
Sima Inter Products Co.,Ltd.—Thailand
Pathum Rice Mill and Granary Public Co.,Ltd.— Pathumthani, Thailand

Reference Project

Project Timeline

- 2001 E-Saan Sugar Industry Co.,Ltd.—Kalasin, Thailand
- 2002 Saharuang Co.,Ltd.—Mookdahan, Thailand
NY Sugar Co.,Ltd.—Nakhonratchasima, Thailand
United Farmer & Industry Co.,Ltd.—Khonkaen, Thailand
United Farmer & Industry Co.,Ltd.—Chaiyaphum, Thailand
Thai Acrylic Fiber Co.,Ltd.—Saraburi, Thailand
- 2003 Chumkporn Palm Oil Public Co.,Ltd.—Chumporn, Thailand
Pathum Rice Mill and Granary Public Co.,Ltd.—Pathumthani, Thailand
Thai Cane Paper Public Co.,Ltd.
Mitr Phol Co.,Ltd.—Suphanburi, Thailand
United Farmer & Industry Co.,Ltd.—Chaiyaphum, Thailand
Mitr Phu Viang Sugar Co.,Ltd.—Khonkaen, Thailand
New Krung Thai Sugar Factory Co.,Ltd.—Kanchanaburi, Thailand
Mitr Kalasin Sugar Co.,Ltd.—Kalasin, Thailand
Khonkaen Sugar Co.,Ltd.—Khonkaen, Thailand
Singburi Sugar Co.,Ltd.—Singburi, Thailand
T.N. Sugar Industry Co.,Ltd.—Lopburi, Thailand
Thai Power Supply Co.,Ltd.—Prajeenburi, Thailand
NY Sugar Co.,Ltd.—Nakhonratchasima, Thailand
Angvien Industry Co.,Ltd.—Nakhonratchasima, Thailand
- 2004 Buayai Bio Power Co.,Ltd.—Nakhonratchasima, Thailand
Union Ratchaburi (1992) Co.,Ltd.—Ratchaburi, Thailand
Khonkaen Sugar Co.,Ltd.—Khonkaen, Thailand
Angvien Industry Co.,Ltd.—Nakhonratchasima, Thailand
Chumporn Palm Oil Industry Co.,Ltd.—Chumporn, Thailand
Mitrphol Danchang Co.,Ltd.—Suphanburi, Thailand
Eastern Sugar and Cane Co.,Ltd.—Saekaew, Thailand
Wang Palm Oil Co.,Ltd.—Prajeenburi, Thailand
United Farmer & Industry Co.,Ltd.—Chaiyaphum, Thailand
Blackhouse Foodfield Internal Co.,Ltd.—Phatumthani, Thailand
Thai Acrylic Fiber Co.,Ltd.—Saraburi, Thailand
Indorama Chemical (Thailand) Co.,Ltd.—Saraburi, Thailand
Phu-Khiao Bio-Energy Co.,Ltd.—Chaiyaphum, Thailand

Reference Project

Project Timeline

- 2004 Mitr Kalasin Sugar Co.,Ltd.—Kalasin, Thailand
Singburi Sugar Co.,Ltd.—Singburi, Thailand
T.N.Sugar Industry Co.,Ltd.—Lopburi, Thailand
Thai Power Supply Co.,Ltd.—Praeeenburi, Thailand
NY Sugar Co.,Ltd.—Nakornratchasima, Thailand
Angvien Industry Co.,Ltd.—Nakornratchasima, Thailand
Chia Meng Co.,Ltd.—Nakhonratchasima, Thailand
New Krung Thai Sugar Factory Co.,Ltd.—Kanchanaburi, Thailand
Mir Kalasin Sugar Co.,Ltd.—Kalasin, Thailand
Thai Plywood Co.,Ltd.—Saraburi, Thailand
Burapha Industry Co.,Ltd.—Phathumthani, Thailand
The Saha-Ruang Co.,Ltd.—Mukdakan, Thailand
- 2005 Mitr Phol Sugar Co.,Ltd.—Suphanburi, Thailand
Wang N T Craft Paper Co.,Ltd.—Lopburi, Thailand
Phu-Khieo Bio-Energy Co.,Ltd.—Chaiyaphum, Thailand
HV Fila Co.,Ltd.—Samutsakhon, Thailand
Sahaviriya Steel Industry Public Co.,Ltd.—Thailand
United farmer & Industry—Chaiyaphum, Thailand
U-Thong Biomass Co.,Ltd.—Suphanburi, Thailand
- 2006 Indorama Chemicals (Thailand) Co.,Ltd.—Saraburi, Thailand
HV Fila Co.,Ltd.—Samutsakhon, Thailand
Kalasin Flour Co.,Ltd.—Kalasin, Thailand
United Farmer & Industry Co.,Ltd.—Chaiyaphum, Thailand
Chumporn Palm Oil Industry Public Co.,Ltd.—Chumporn, Thailand
Mitr Kalasin Sugar Co.,Ltd.—Kalasin, Thailand
- 2007 Thai Acrylic fiber Co.,Ltd.—Saraburi, Thailand
Indorama Chemicals (Thailand) Co.,Ltd.—Saraburi, Thailand
Singburi Sugar Co.,Ltd.—Singburi, Thailand
Thai Plywood Co.,Ltd.—Saraburi, Thailand
Burapha Industry Co.,Ltd.—Pathumthani, Thailand
Mori Association
Buasomma Power Plant—Roi-et, Thailand
Khonburi Sugar Co.,Ltd.—Nakhonratchasima, Thailand

Reference Project

Project Timeline

- 2007 Buayai Bio Power Co.,Ltd.—Nakhonratchasima, Thailand
Blackhouse Feedfiled International Co.,Ltd.—Pathumthani, Thailand
Kalasin Flour Co.,Ltd.—Kalasin, Thailand
Mitr Kalasin Sugar Co.,Ltd.—Kalasin, Thailand
Chumporn Palm Oil Industry Public Co.,Ltd.—Chumporn, Thailand
E-Saan Sugar Industry Co.,Ltd.—Kalasin, Thailand
- 2008 Mitr Lao Sugar Co.,Ltd. - Lao PDR
Mitr Phu Viang Sugar Co.,Ltd.—Khonkaen, Thailand
Numchai Power Supply Co.,Ltd.—Suphanburi, Thailand
Danchang Bio-Energy Co.,Ltd.—Suphanburi, Thailand
Phu-Khieo Bio-Energy Co.,Ltd.—Chaiyaphum, Thailand
- 2009 Singburi Sugar Co.,Ltd.—Singburi, Thailand
Erawan Sugar Co.,Ltd.—Nongbualamphu, Thailand
- 2010 Eastern Sugar and Cane Co.,Ltd.—Saekaew, Thailand
Singburi Sugar Co.,Ltd.—Singburi, Thailand
United Farmer & Industry Co.,Ltd.—Chaiyaphum, Thailand
Reamudom Sugar Factory Co.,Ltd.—Udonthani, Thailand
T.N.Sugar Industry Co.,Ltd.—Lopburi, Thailand
Pranburi Sugar Industry Co.,Ltd.—Prachubkirikan, Thailand
Erawan Power Co.,Ltd.—Nongbualumphu, Thailand
- 2011 Erawan Power Co.,Ltd.—Nongbualumphu, Thailand
Reamudom Sugar Factory Co.,Ltd.—Udonthani, Thailand
Phu-Khieo Bio-Energy Co.,Ltd.—Chaiyaphum, Thailand
Dan Chang Bio-Energy Co.,Ltd.—Suphanburi, Thailand
Phnom Penh Sugar Co.,Ltd.—Cambodia
- 2012 Erawan Power Co.,Ltd.—Nongbualuphu, Thailand
Kampangpetch Sugar Co.,Ltd.—Kampangpetch, Thailand
ES Energy Co.,Ltd.—Saekaew, Thailand
- 2016 ES Energy Co.,Ltd.—Saekaew, Thailand
- 2018 Phnom Penh Sugar Co.,Ltd.—Cambodia

Reference Project

21/1 Moo.1 Huapho-Bansing Rd., Huapho, Bangphae, Ratchaburi 70160

Tel. 032-349515 Fax. 032-349398

<http://www.bpe-boiler.com> e-mail : contact@bpe-boiler.com



Capacity 8,000 TCD



Designed, Fabricated and Erected Capacity expansion to 8,000 TCD

Mill section, Mill Tandam

Evaporator, Vacuum pan, Centrifugal

Raw sugar silo

Steam Turbine Generator 12.5 MW

Sugar Mill Capacity 8,000 TCD

E-Saan Sugar Industry Co., Ltd. (2001)



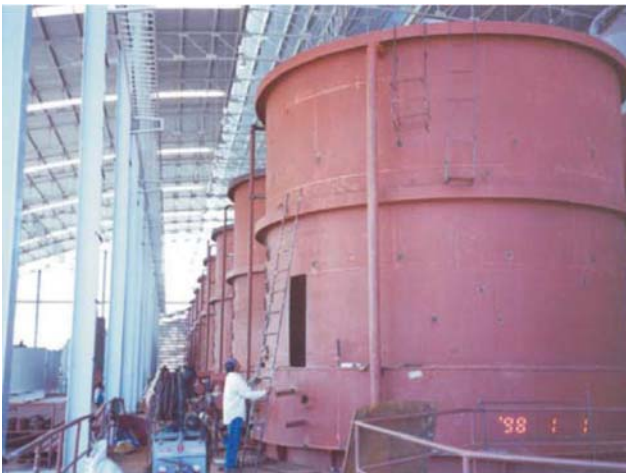
Sugar Mill Capacity 8,000 TCD

E-Saan Sugar Industry Co., Ltd. (2001)



Sugar Mill Capacity 8,000 TCD

E-Saan Sugar Industry Co., Ltd. (2001)



Sugar Mill Capacity 8,000 TCD

E-Saan Sugar Industry Co., Ltd. (2001)



Boiler 250 T/H

1 unit (2001)

E-Saan Sugar Industry Co., Ltd.



Designed, Fabricated and Erected Boiler 250 T/H E-Saan Sugar Industry Co., Ltd.
Kalasin Province (Type of fuel : Bagasse)

Boiler Model	BE-250T/H-30K-S/H	
Pressure	26	kg/cm ²
Temperature	360	°C
Fuel and Ash handing System		
Control System (Single Loop)		
Deaerator		

Boiler 250 T/H

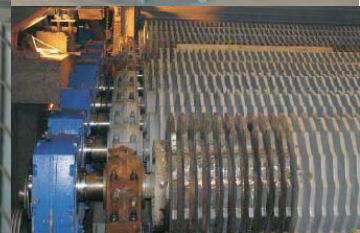


E-Saan Sugar Industry Co., Ltd. (2001)



Sugar Mill Capacity 12,000 TCD

Saharung Co., Ltd. (2004)



Designed, Fabricated and Erected Capacity expansion from 9,000 TCD to 12,000 TCD

Mill section, Mill Tandam 5 units

Roller Sand

Extraction Steam Turbine 12 MW

Cooling System for Power Plant

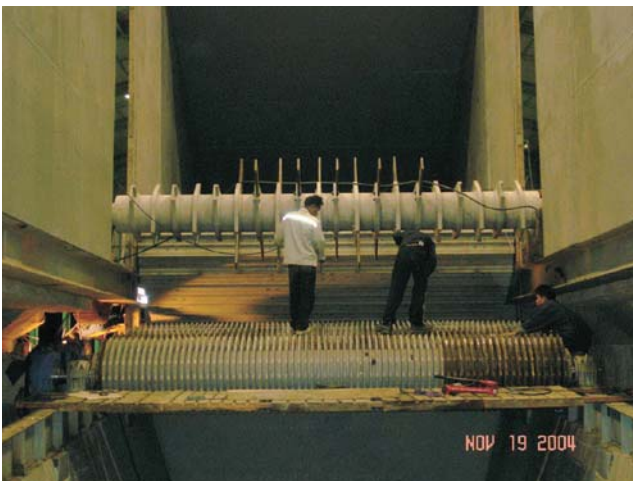
Sugar Mill Capacity 12,000 TCD

Saharung Co., Ltd. (2004)



Sugar Mill Capacity 12,000 TCD

Saharung Co., Ltd. (2004)



Sugar Mill Capacity 12,000 TCD

Saharuang Co., Ltd. (2004)



Boiler 120 T/H

1 unit

Saharuang Co., Ltd. (2002)



Designed, Fabricated and Erected Boiler 120 T/H Saharuang Co., Ltd.
Mukdahan Province (Type of fuel : Bagasse)

Boiler Model	BE-120T/H-30K-S/H
Pressure	26 kg/cm ²
Temperature	360 °C
Fuel and Ash handing System	
Control System (Single Loop)	

Boiler 120 T/H

Saharuang Co., Ltd. (2002)



Sugar Mill Capacity 6,000 TCD

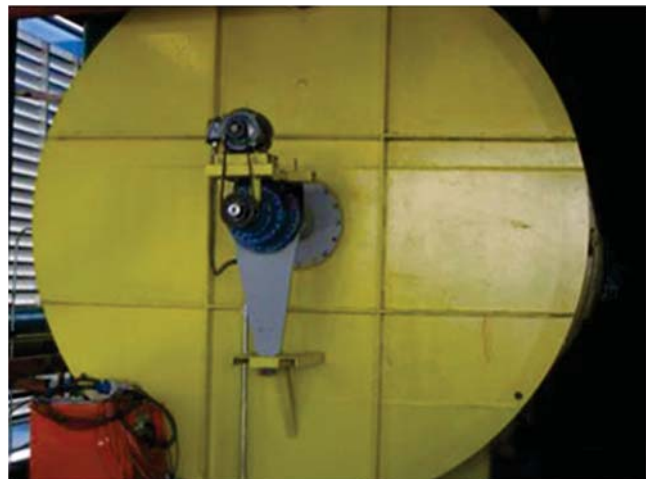
Mitr Lao Sugar Co., Ltd. (2007)



Fabrication and Erection – Instrument for produce sugar
Mitr Lao Sugar Co., Ltd. : Laos People Democratic Republic
Evaporator E1, E2, E3, E4, E5
Heater, Hot Water Tank
Clarifier Tank
Condensate Tank for E1, E2, E3, E4, E5

Sugar Mill Capacity 6,000 TCD

Mitr Lao Sugar Co., Ltd. (2007)



Sugar Mill Capacity 6,000 TCD

Mitr Lao Sugar Co., Ltd. (2007)



Modification Boiler 72 T/H

1 unit

Mitr Lao Sugar Co., Ltd. (2007)



Modification and relocate Boiler 1 unit from Mitr Kalasin Sugar Co., Ltd. to Mitr Lao Sugar Co., Ltd.

Laos People Democratic Republic (Type of fuel : Bagasse)

Modification Boiler up Capacity from 60 T/H to 72 T/H

Pressure	24	kg/cm ²
Temperature	360	°C

Sugar Mill Capacity 15,000 TCD

Erawan Sugar Co., Ltd. (2010-2011)



Designed, Fabricated and Erected Cane Preparation for Mill Section
Truck Unloading Platform
Main Cane Carrier
Cross Cane Carrier
Sand Separator
Belt Conveyor
Silo, Warehouse,

Sugar Mill Capacity 15,000 TCD

Erawan Sugar Co., Ltd. (2010-2011)



Sugar Mill Capacity 15,000 TCD

Erawan Sugar Co., Ltd. (2010-2011)



Sugar Mill Capacity 15,000 TCD

Erawan Sugar Co., Ltd. (2010-2011)



Sugar Mill Capacity 15,000 TCD

Erawan Sugar Co., Ltd. (2010-2011)



Boiler 200 T/H

1 units

Erawan Power Co., Ltd. (Year 2010)



Designed, Fabricated and Erected Boiler 200 T/H, Erawan Power Co., Ltd.
Nong Bua Lam Phu Province (Type of fuel : Bagasse)

Boiler Model	BE-200T/H-40K-S/H
Pressure	32 kg/cm ²
Temperature	400 °C
Electro static precipitator (ESP)	
Ash handing system	

Boiler 200 T/H



Erawan Power Co., Ltd. (Year 2010)



Boiler 200 T/H

Erawan Power Co., Ltd. (Year 2010)



Boiler 300 T/H

1 units

Erawan Power Co., Ltd. (Year 2012)



Designed, Fabricated and Erected Boiler 300 T/H, Erawan Power Co., Ltd.
Nong Bua Lam Phu Province (Type of fuel : Bagasse)

Boiler Model	BE-300T/H-40K-S/H
Pressure	32 kg/cm ²
Temperature	400 °C
Electro static precipitator (ESP)	
Ash handing system	

Boiler 300 T/H



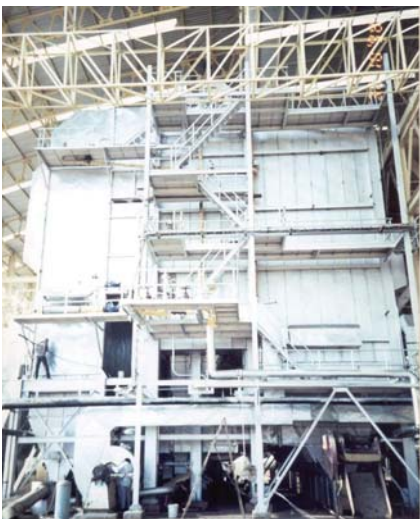
Erawan Power Co., Ltd. (Year 2012)



Modification

Boiler 5 units

Mitr Kalasin Sugar Co., Ltd. (1997-1998)



Modification and relocate Boiler 5 units from Mitr Siam Sugar to Mitr Kalasin Sugar Co., Ltd.

Amphoe Kuchinarai Kalasin Province (Type of fuel : Bagasse)

Modification Boiler Capacity from 60 T/H to Capacity 80 T/H

Pressure	24	kg/cm ²
Temperature	380	°C

Boiler 20 T/H

1 unit

S.R. Tyres Co., Ltd. (2004)



Designed, Fabricated and Erected Boiler 20 T/H S.R. Tyres Co., Ltd.
Prachinburi Province (Type of fuel : coal, wood chip)

Boiler Model	BE-20T/H-15K-SAT
Pressure	15 kg/cm ²
Temperature	200 °C
Fuel and Ash handing System	
Control System (Single Loop)	

Boiler 35 T/H

1 unit

Bua Yai Bio Power Co., Ltd. (2004-2005)



Designed, Fabricated and Erected Boiler 35 T/H Bua Yai Bio Power Co., Ltd.
Nakorn-Ratchasima Province (Type of fuel : rice husk)

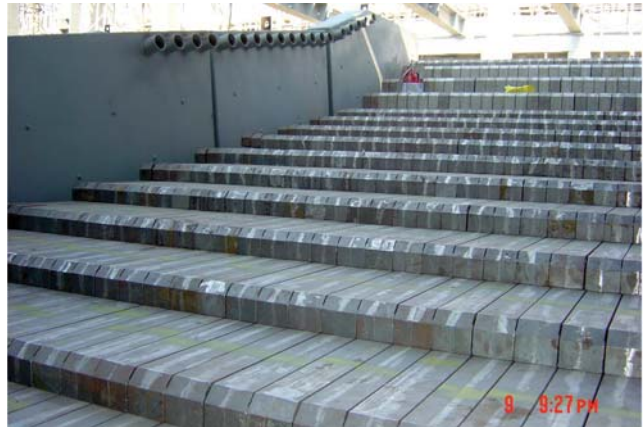
For VSPP 7.5 MW

Boiler Model	BE-35T/H-40K-S/H
Pressure	40 kg/cm ²
Temperature	450 °C
Fuel and Ash handing System	
Cooling water System	

Boiler 35 T/H



Bua Yai Bio Power Co., Ltd. (2004-2005)



Boiler 40 T/H (Biomass Power Plant 7.5 MW)

1 unit

U-Thong Biomass Co., Ltd. (2005-2006)



Designed, Fabricated and Erected Boiler 40 T/H U-Thong Biomass Co., Ltd.

Suphanburi province (Type of fuel : rice husk)

Turn-key Project Biomass Power Plant 7.5 MW

Boiler Model BE-40T/H-45K-S/H

Pressure 45 kg/cm²

Temperature 450 °C

Electro static precipitator (ESP), Deaerator

Fuel and Ash handing System

Water treatment plant, Cooling water System

DCS control, Electrical system, Transmission line



Boiler 135 T/H

2 units

Mitr Phu Viang Sugar Co.,Ltd. (2008-2009)



Designed, Fabricated and Erected Boiler 135 T/H Mitr Phu Viang Sugar Co.,Ltd.
(Type of fuel : Bagasse)

Boiler Model	BE-S-135T/H-50K-S/H
Pressure	46 kg/cm ²
Temperature	485 °C
Electro static precipitator (ESP)	
Ash handing system	

Boiler 135 T/H

Mitr Phu Viang Sugar Co.,Ltd. (2008-2009)



Boiler 135 T/H

Mitr Phu Viang Sugar Co.,Ltd. (2008-2009)



Boiler 135 T/H

Mitr Phu Viang Sugar Co.,Ltd. (2008-2009)



Boiler 135 T/H

Mitr Phu Viang Sugar Co.,Ltd. (2008-2009)



Boiler 130 T/H

1 units

Mitrphol Bio-Power (Phu-Khieo) Co., Ltd. (Year 2012)



Designed, Fabricated and Erected Boiler 130 T/H, Mitrphol Bio-Power (Phu-Khieo) Co.,Ltd. Amphoe Phu-Khieo, Chaiyaphum Province (Type of fuel : Bagasse)

Boiler Model	BE-130T/H-35K-S/H	
Pressure	30	kg/cm ²
Temperature	380	°C
Wet scrubber		
Ash handing system		

Boiler 130 T/H

1 units

Mitrphol Bio-Power (Danchang) Co., Ltd. (Year 2012-2013)



Designed, Fabricated and Erected Boiler 130 T/H, Mitrphol Bio-Power (Danchang) Co.,Ltd. Amphoe Danchang, Suphanburi Province (Type of fuel : Bagasse)

Boiler Model	BE-S-130T/H-35K-S/H
Pressure	30 kg/cm ²
Temperature	400 °C
Wet scrubber	
Ash handing system	

Boiler 150 T/H

1 units

Phnom Penh Sugar Co., Ltd. (Year 2012)



Designed, Fabricated and Erected Boiler 150 T/H, Phnom Penh Sugar Co., Ltd.
Cambodia (Type of fuel : Bagasse)

Boiler Model	BE-150T/H-48K-S/H
Pressure	42 kg/cm ²
Temperature	450 °C
Deaerator	
Ash handling system	

Boiler 150 T/H

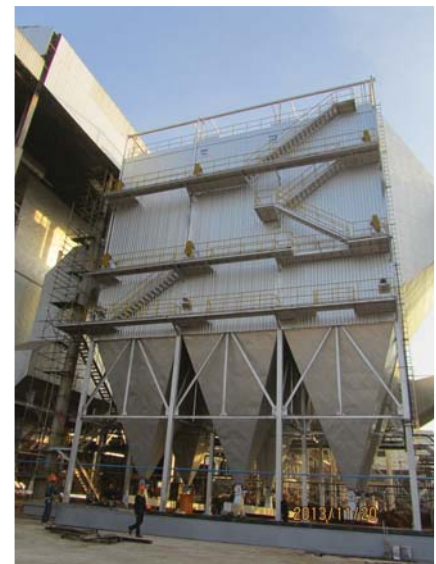
Phnom Penh Sugar Co., Ltd. (Year 2012)



Boiler 150 T/H

1 units

ES Energy Co., Ltd. (2013)



Designed, Fabricated and Erected Boiler 150 T/H, ES Energy Co.,Ltd. Saekaew Province (Type of fuel : Bagasse)

Boiler Model	BE-S-150T/H-48K-S/H
Pressure	42 kg/cm ²
Temperature	460 °C
Electro static precipitator (ESP)	
Deaerator	
Ash handling system	

Boiler 150 T/H

ES Energy Co., Ltd. (2013)



Boiler 150 T/H

1 units ES Energy Co., Ltd. (2016)



Designed, Fabricated and Erected Boiler 150 T/H, ES Energy Co.,Ltd. Saekaew Province (Type of fuel : Bagasse)

Boiler Model	BE-S-150T/H-48K-S/H	
Pressure	42	kg/cm ²
Temperature	460	°C
Electro static precipitator (ESP)		
Deaerator		
Ash handling system		

Boiler 150 T/H

ES Energy Co., Ltd. (2016)



Boiler 100 T/H

1 units Phnom penh sugar Co., Ltd. (2018)



Designed, Fabricated and Erected Boiler 100 T/H, Phnom penh sugarCo.,Ltd.
Cambodia (Type of fuel : Bagasse)

Boiler Model	BE-S-100T/H-48K-S/H
Pressure	42 kg/cm ²
Temperature	460 °C
Deaerator	
Ash handling system	

Boiler 100 T/H

Phnom penh sugar Co., Ltd. (2018)

